

# NEW LAM FORMULA

**LAM PLAN<sup>®</sup> SA**



The new standard in material testing



# New Lam Formula - The new standard in material testing



The introduction of new material and new production techniques also entailed a change in quality assurance standards.

Highest demands are therefore made on material testing, in particular in the fields of metallography and ceramography. In addition to an increase in the evidence of material specimens the lapping and polishing techniques applied are expected to offer easier handling, reduced working time and higher profitability.

With New Lam Formula, Lam Plan presents a new comprehensive lapping and polishing system for material testing with many advantages, suitable for the whole range of metallographic specimens.

## New Lam Formula - The new generation lapping/polishing system

With this new Lam Plan development the technical and economic conditions for the lapping and polishing of embedded and non-embedded specimens have changed.

## Technical possibilities enlarged and simplified:

New Lam Formula

- is suitable for the entire range of metallographic specimens,
- improves the evidence of the specimens,
- offers increased security in practical application through colour coding of the materials and the specific lapping and polishing processes.

## Profitability improved

New Lam Formula reduces:

- the number of lapping and polishing steps
- the time required for each step
- the quantities of products used





Material	Resin	Preparation	1	2	3	4
Ceramics Zircon Aluminas	607	40 μ				
Sintered Carbides Cermets	607	40 μ				
Lamellar spheroid & graphitic cast irons	607	40 μ				
Hard & semi-hard steels	607	40 μ				
Mild steels Stainless steels Ferritic austenitics	605	P 240				
Copper alloys	605	P 400				
Aluminium & Aluminium alloys	605	P 400				
Titanium & Titanium alloys	605	P 240				



Plates



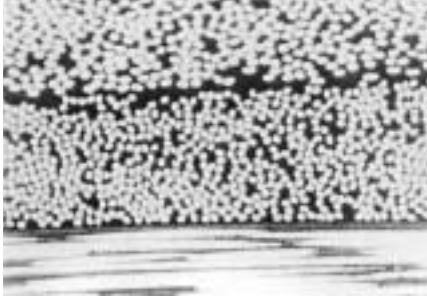
Polishing cloths



Diamond liquid



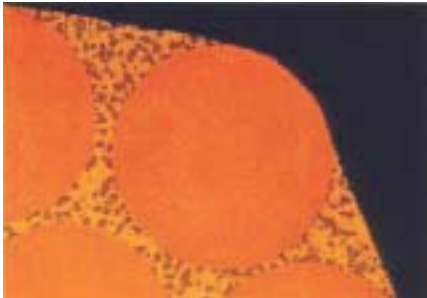
# The new system



CFK carbon fibers in plastic matrix



Plasma steel in aluminium nitrate



Electronic wires CnPb

Two poli-lapping plates, three polishing cloths and five diamond liquids to handle the entire range of metallographic specimens.

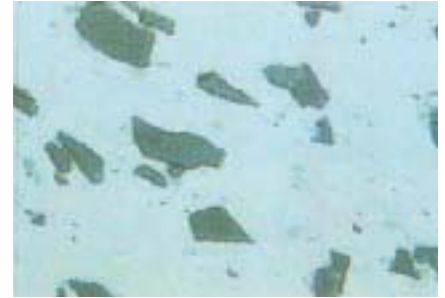
The colour coding of the products and the working steps helps simplifying the handling in every-day practice.

The opposite graph shows the new system of combined lapping plates, polishing cloths and diamond liquids.

The colour coding permits the identification and the use of the products in a reduced time and with increased security.



SiC in aluminium matrix



Copper Tin coated with Ni and SnPb

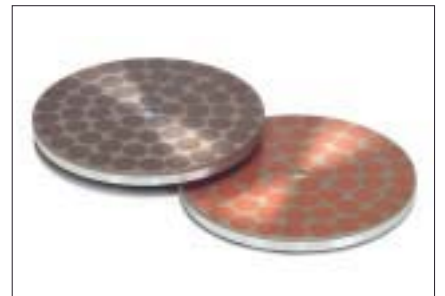
## Packaging

### New Lam Polishing cloths

Reference	Designation	Diameter
04 NL005 20	YELLOW	200 mm
04 NL005 30	YELLOW	230 mm
04 NL005 40	YELLOW	250 mm
04 NL005 50	YELLOW	300 mm
04 NL006 20	ORANGE	200 mm
04 NL006 30	ORANGE	230 mm
04 NL006 40	ORANGE	250 mm
04 NL006 50	ORANGE	300 mm
04 NL007 20	RED	200 mm
04 NL007 30	RED	230 mm
04 NL007 40	RED	250 mm
04 NL007 50	RED	300 mm

### New Lam plates

Reference	Designation	Diameter
09 NL003 20	BLEU	200 mm
09 NL003 30	BLEU	230 mm
09 NL003 40	BLEU	250 mm
09 NL003 50	BLEU	300 mm
09 NL006 20	VERT	200 mm
09 NL006 30	VERT	230 mm
09 NL006 40	VERT	250 mm
09 NL006 50	VERT	300 mm



### New Lam BioDIAMANT® 250 g Liquids

Reference	Designation
02 NL003 00	BLUE
02 NL004 00	GREEN
02 NL005 00	YELLOW
02 NL006 00	ORANGE
02 NL008 00	RED

